

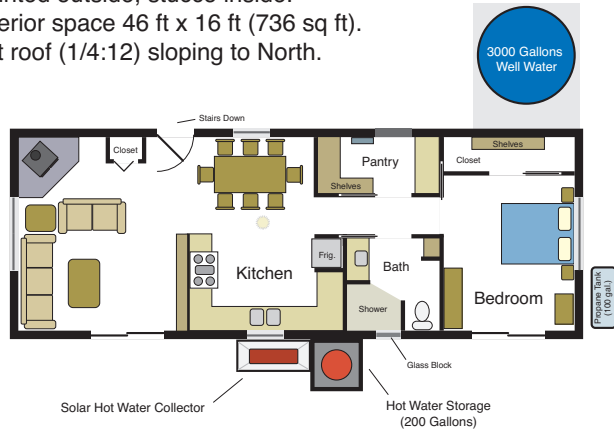
Concrete Block House Plan v 0.1 - Phases of Construction

March 28, 2007

© 2006-2007 ByExample.com

Phase 1

- 47.33 ft x 17.33 ft Concrete Block Core House (820 sq ft)
- 8" thick masonry walls, voids filled with local clay & sand.
 - key points reinforced with rebar & concrete.
 - insulated wood floor & 3' crawl space with concrete slab.
 - 3000 gallon well water storage tank on concrete pad.
 - painted outside, stucco inside.
 - interior space 46 ft x 16 ft (736 sq ft).
 - flat roof (1/4:12) sloping to North.

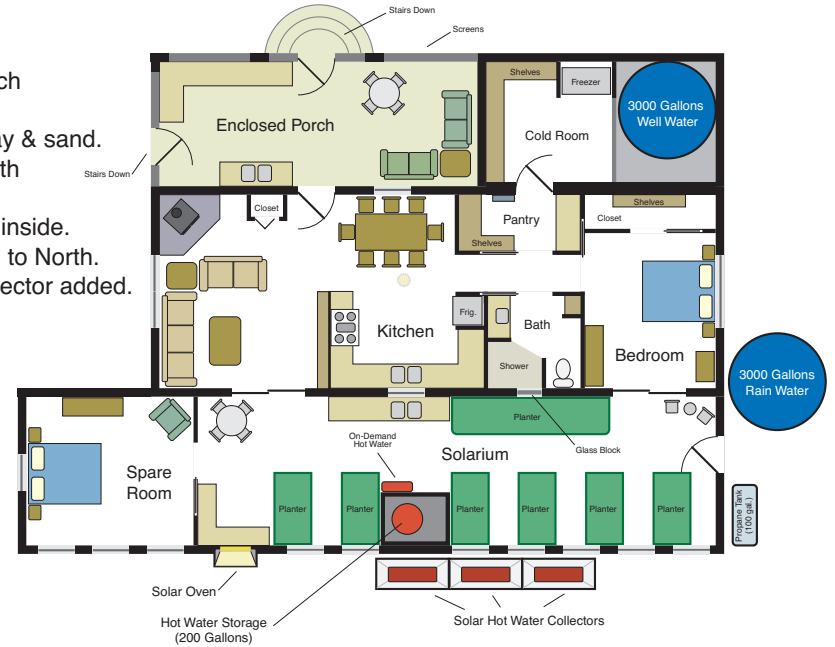


Room Dimensions

- Living 14 ft x 16 ft
- Dining 10 ft x 8 ft
- Kitchen 12.5 ft x 8 ft
- Pantry 10 ft x 4.5 ft
- Bath 7.5 ft x 7.5 ft
- Bedroom 10.75 ft x 12.75 ft
- Walk-in Closet 10.75 ft x 3 ft

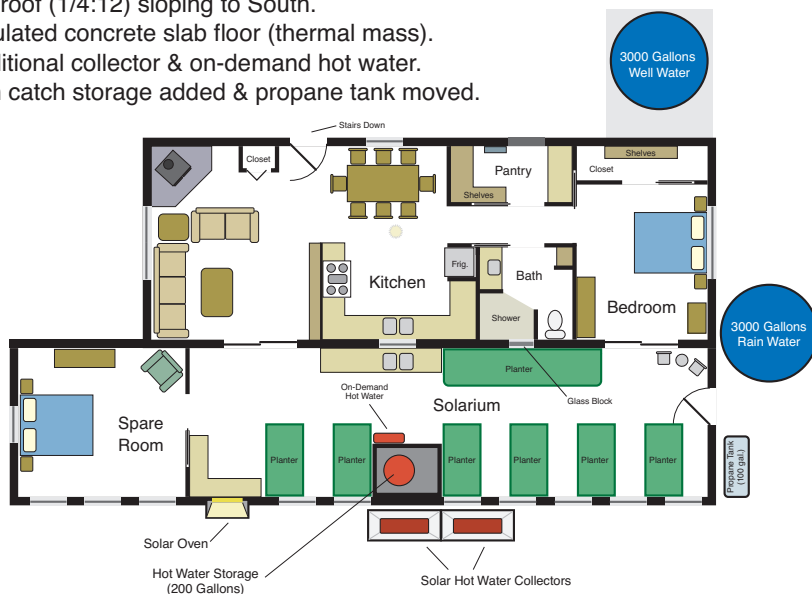
Phase 3

- 19 ft x 10 ft Cold Room
- 26 ft x 10 ft Enclosed Porch
- 8" thick masonry walls, voids filled with local clay & sand.
- key points reinforced with rebar & concrete.
- painted outside, stucco inside.
- flat roof (1/4:12) sloping to North.
- additional hot water collector added.



Phase 2

- 58.33 ft x 12.66 ft Solarium Addition
- 8" thick masonry walls, voids filled with local clay & sand.
 - key points reinforced with rebar & concrete.
 - painted outside, stucco inside.
 - interior space 57 ft x 12 ft (684 sq ft).
 - flat roof (1/4:12) sloping to South.
 - insulated concrete slab floor (thermal mass).
 - additional collector & on-demand hot water.
 - rain catch storage added & propane tank moved.



Phase 4

- Outer Skin, 11 ft x 10 ft Bath House & 24 ft x 11 ft Patio
- 8" thick masonry walls covered with 2" styrofoam & stucco.
 - key points reinforced with rebar & concrete.
 - concrete slab floor on patio & bath house.
 - outdoor shower & secret garden added.
 - additional hot water collector added.
 - flat roof (1/4:12) sloping to East.

